

# JVC

# SCHEMATIC DIAGRAMS

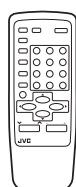
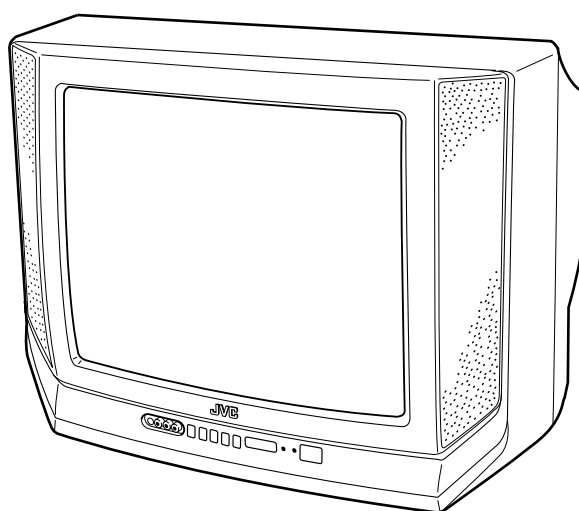
## COLOR TELEVISION

**AV-14F13/PH**  
**AV-14F33/PH**

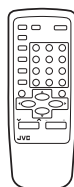
BASIC CHASSIS

GA2

CD-ROM No.SML200208



RM-C372GY  
[AV-14F13/PH]



RM-C373GY  
[AV-14F33/PH]

## CONTENTS

■ NOTE ON USING CIRCUIT DIAGRAMS .....	2-1
■ SEMICONDUCTOR SHAPES .....	2-2
■ BLOCK DIAGRAM .....	2-3
■ CIRCUIT DIAGRAMS .....	2-7
■ PATTERN DIAGRAMS .....	2-15
■ CHANNEL CHART .....	2-21

CONTENTS

SEMICONDUCTOR SHAPES	2-2
BLOCK DIAGRAM	
[AV-14F13]	2-3
[AV-14F33]	2-5
CIRCUIT DIAGRAMS	
[AV-14F13]	
MAIN PWB CIRCUIT DIAGRAM	2-7
MAIN PWB & CRT SOCKET PWB CIRCUIT DIAGRAM	2-9
[AV-14F33]	
MAIN PWB CIRCUIT DIAGRAM	2-11
MAIN PWB & CRT SOCKET PWB CIRCUIT DIAGRAM	2-13
PATTERN DIAGRAMS	
[AV-14F13]	
MAIN PWB PATTERN	2-15
CRT SOCKET PWB PATTERN (Within MAIN PWB )	2-19
[AV-14F33]	
MAIN PWB PATTERN	2-17
CRT SOCKET PWB PATTERN (Within MAIN PWB )	2-20
CHANNEL CHART	2-21

SEMICONDUCTOR SHAPES

TRANSISTOR

BOTTOM VIEW	FRONT VIEW				TOP VIEW
					CHIP TR 

IC

BOTTOM VIEW	FRONT VIEW			TOP VIEW

CHIP IC

TOP VIEW	

AV-14F13/PH,AV-14F33/PH

STANDARD CIRCUIT DIAGRAM

■ NOTE ON USING CIRCUIT DIAGRAMS

- 1.SAFETY**

The components identified by the symbol and shading are critical for safety. For continued safety replace safety critical components only with manufactures recommended parts.
- 2.SPECIFIED VOLTAGE AND WAVEFORM VALUES**

The voltage and waveform values have been measured under the following conditions.

(1)Input signal	: Colour bar signal
(2)Setting positions of each knob/button and variable resistor	: Original setting position when shipped
(3)Internal resistance of tester	:DC 20kΩ /V
(4)Oscilloscope sweeping time	:H ⇒ 20μS/div :V ⇒ 5mS/div :Others ⇒ Sweeping time is specified
(5)Voltage values	:All DC voltage values

\* Since the voltage values of signal circuit vary to some extent according to adjustments, use them as reference values.

- Type

No indication	:Ceramic capacitor
MM	:Metalized mylar capacitor
PP	:Polypropylene capacitor
MPP	:Metalized polypropylene capacitor
MF	:Metalized film capacitor
TF	:Thin film capacitor
BP	:Bipolar electrolytic capacitor
TAN	:Tantalum capacitor
- (3)Coils**

No unit	: [ μH ]
Others	:As specified
- (4)Power Supply**

	:B1		:B2 (12V)
	:9V		:5V

\* Respective voltage values are indicated
- (5)Test point**

	:Test point		:Only test point display
--	-------------	--	--------------------------
- (6)Connecting method**

	:Connector		:Wrapping or soldering
	:Receptacle		
- (7)Ground symbol**

	:LIVE side ground
	:ISOLATED(NEUTRAL) side ground
	:EARTH ground
	:DIGITAL ground

3.INDICATION OF PARTS SYMBOL [EXAMPLE]

● In the PW board :R1209 → R209

4.INDICATIONS ON THE CIRCUIT DIAGRAM

- (1)Resistors**

● Resistance value

No unit	{ Ω }
K	{K Ω }
M	{M Ω }

● Rated allowable power

No indication	:1/ 16 [W]
Others	:As specified

● Type

No indication	:Carbon resistor
OMR	:Oxide metal film resistor
MFR	:Metal film resistor
MPR	:Metal plate resistor
UNFR	:Uninflamable resistor
FR	:Fusible resistor

\* Composition resistor 1/2 [W] is specified as 1/2S or Comp.
- (2)Capacitors**

● Capacitance value

1 or higher	: [pF]
less than 1	: [μF]

● Withstand voltage

No indication	:DC50[V]
Others	:DC withstand voltage [V]
AC indicated	:AC withstand voltage [V]

\* Electrolytic Capacitors

47/50[Example]:Capacitance value [μF]/withstand voltage[V]

5.NOTE FOR REPAIRING SERVICE

This model's power circuit is partly different in the GND. The difference of the GND is shown by the LIVE : ( ) side GND and the ISOLATED(NEUTRAL) : ( ) side GND.Therefore, care must be taken for the following points.

(1)Do not touch the LIVE side GND or the LIVE side GND and the ISOLATED(NEUTRAL) side GND simultaneously. If the above caution is not respected, an electric shock may be caused. Therefore, make sure that the power cord is surely removed from the receptacle when, for example, the chassis is pulled out.

(2)Do not short between the LIVE side GND and ISOLATED(NEUTRAL) side GND or never measure with a measuring apparatus measure with a measuring apparatus ( oscilloscope, etc.) the LIVE side GND and ISOLATED(NEUTRAL) side GND at the same time. If the above precaution is not respected , a fuse or any parts will be broken.

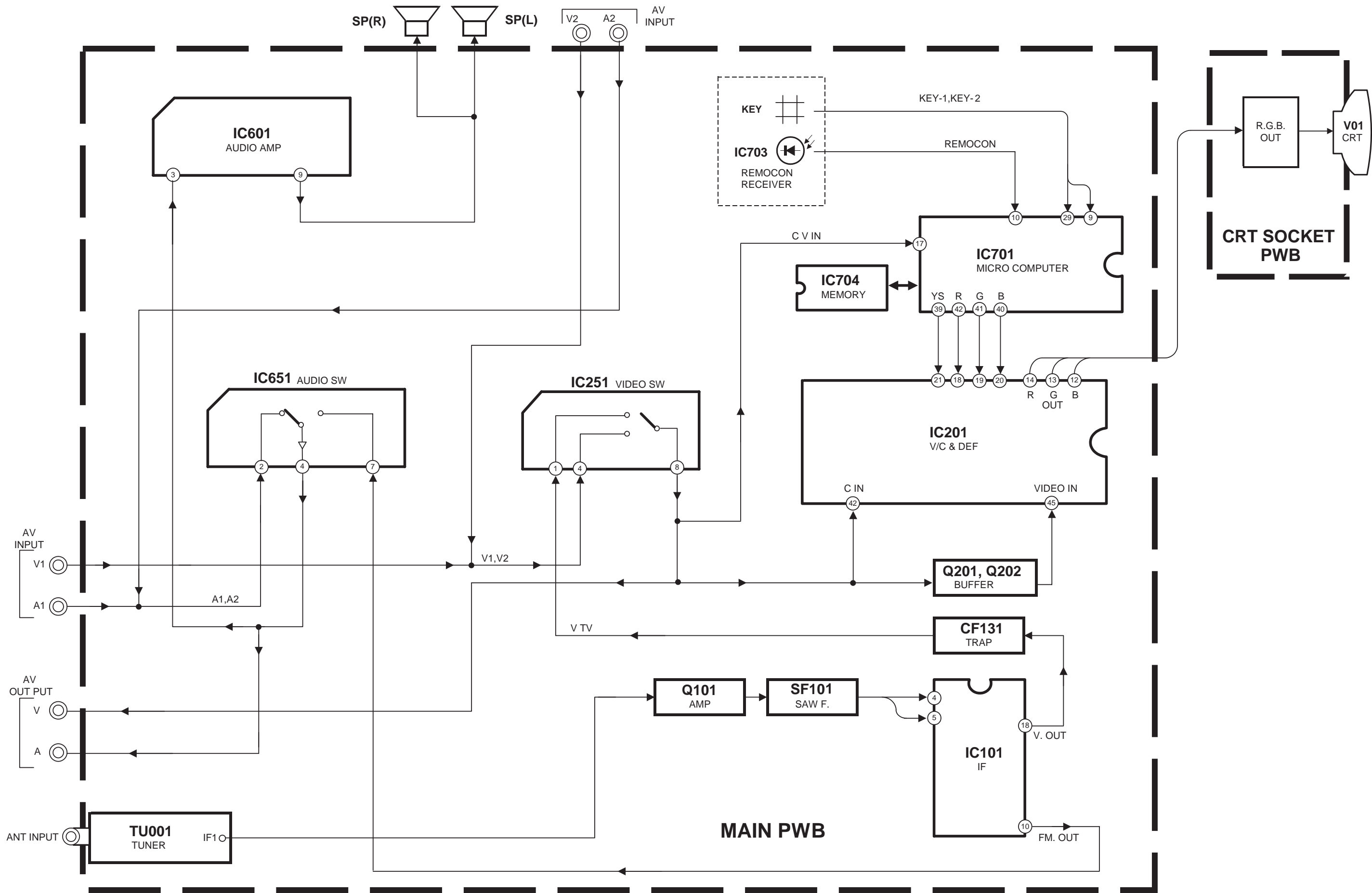
◇ Since the circuit diagram is a standard one, the circuit and circuit constants may be subject to change for improvement without any notice.

NOTE

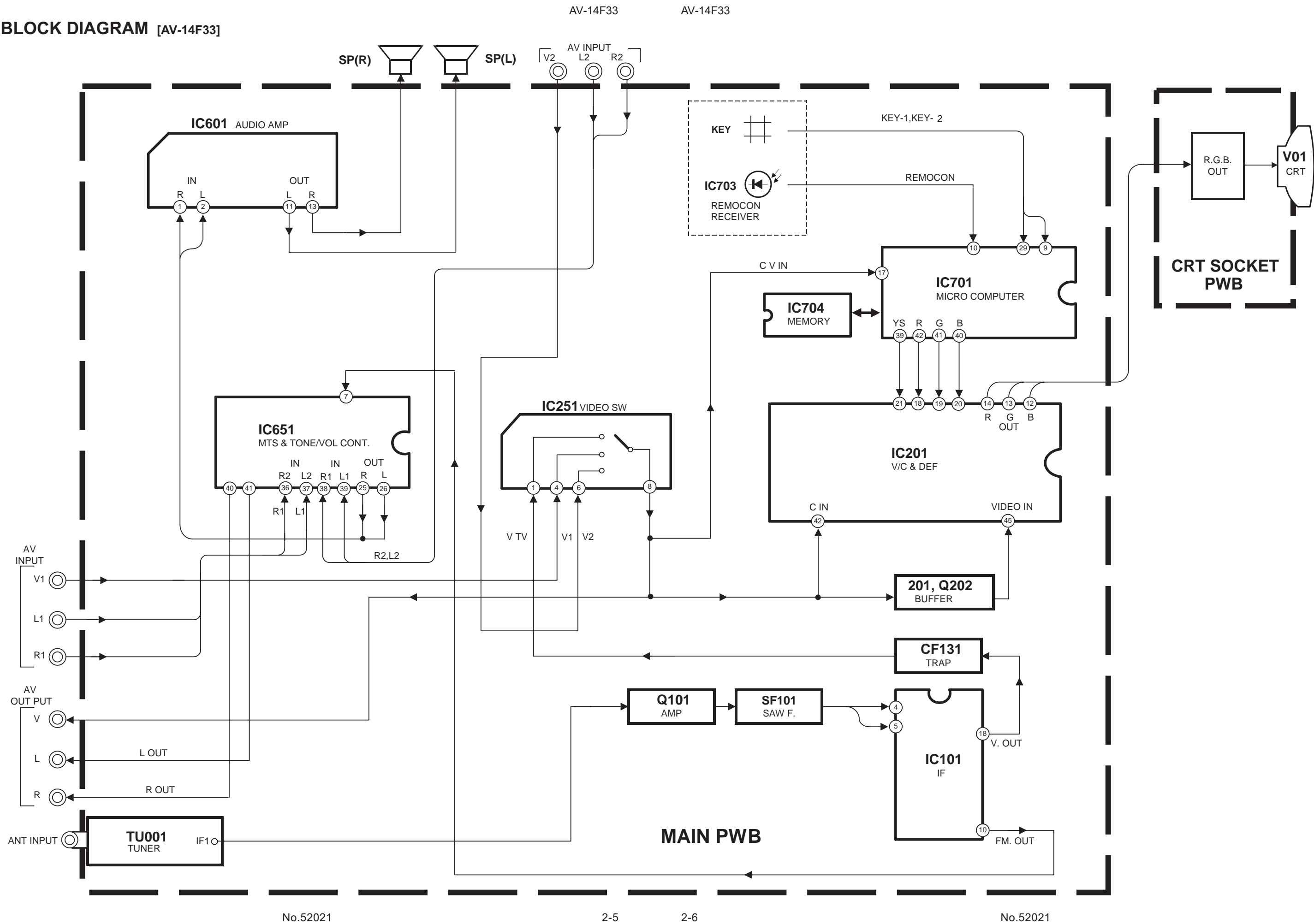
◇ Due improvement in performance, some part numbers show in the circuit diagram may not agree with those indicated in the part list.

When ordering parts, please use the numbers that appear in the Parts List.

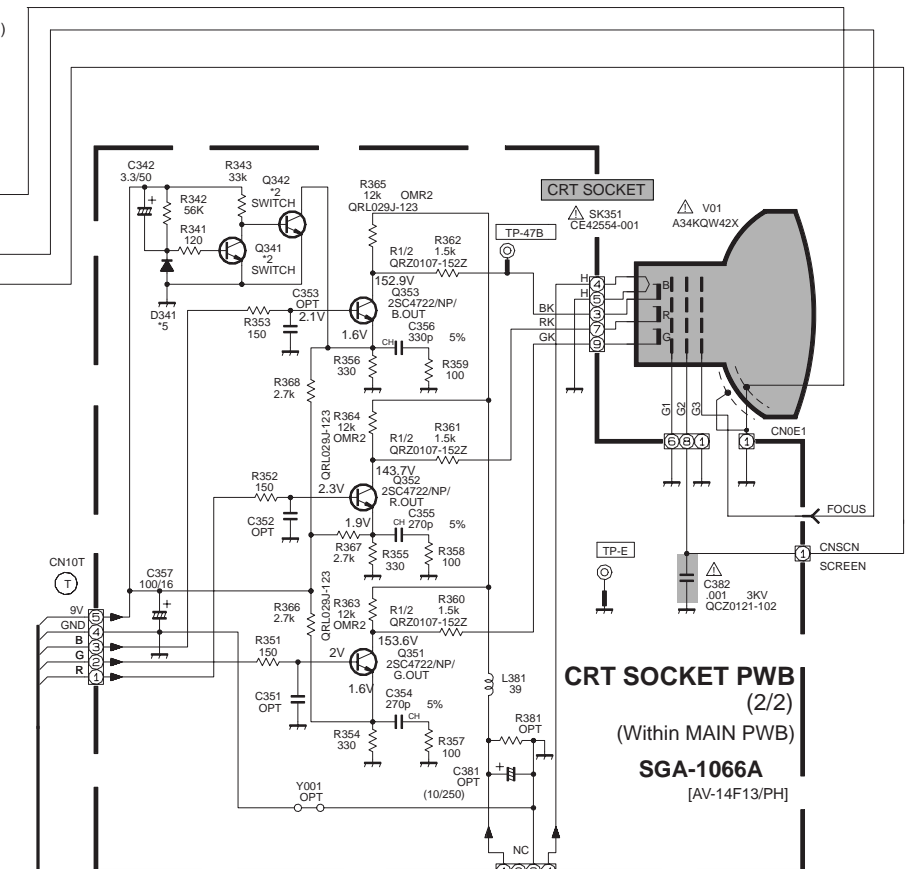
BLOCK DIAGRAM [AV-14F13]




BLOCK DIAGRAM [AV-14F33]







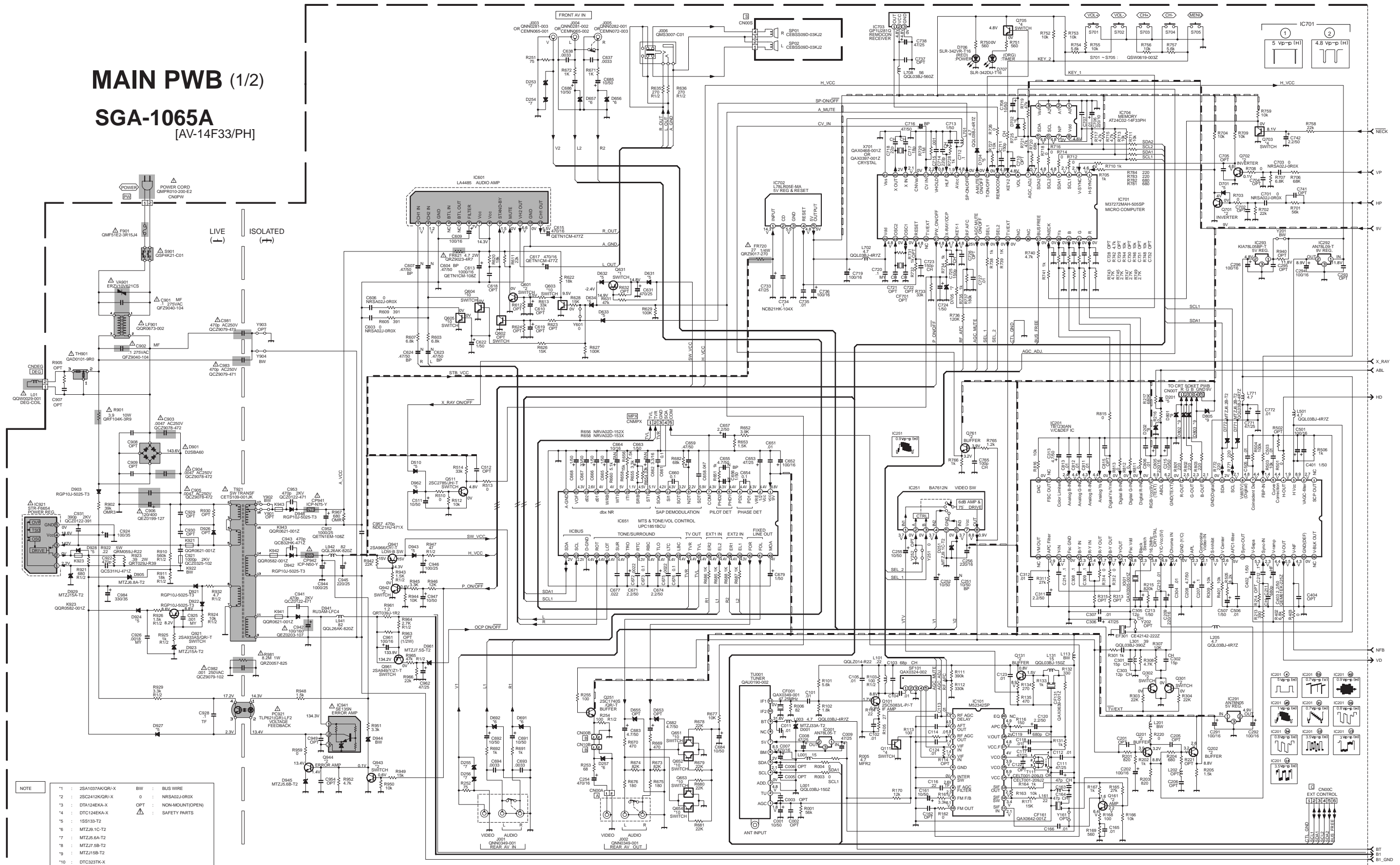
<b>NOTE</b>				
*1	CHIP PNP TR	2SA10374K/OR/-X	BW	BUS WIRE
*2	CHIP NPN TR	2SC2412K/OR/-X	0	NRS402J-OR0X
*3	CHIP PNP D-TR	DTA124EKA-X	OPT	NON-MOUNT (OPEN)
*4	CHIP NPN D-TR	DTC124EKA-X		SAFETY PARTS
*5	SI DIODE	1SS133-T2		
*6	ZENER DIODE	MTZJ9.1C-T2		

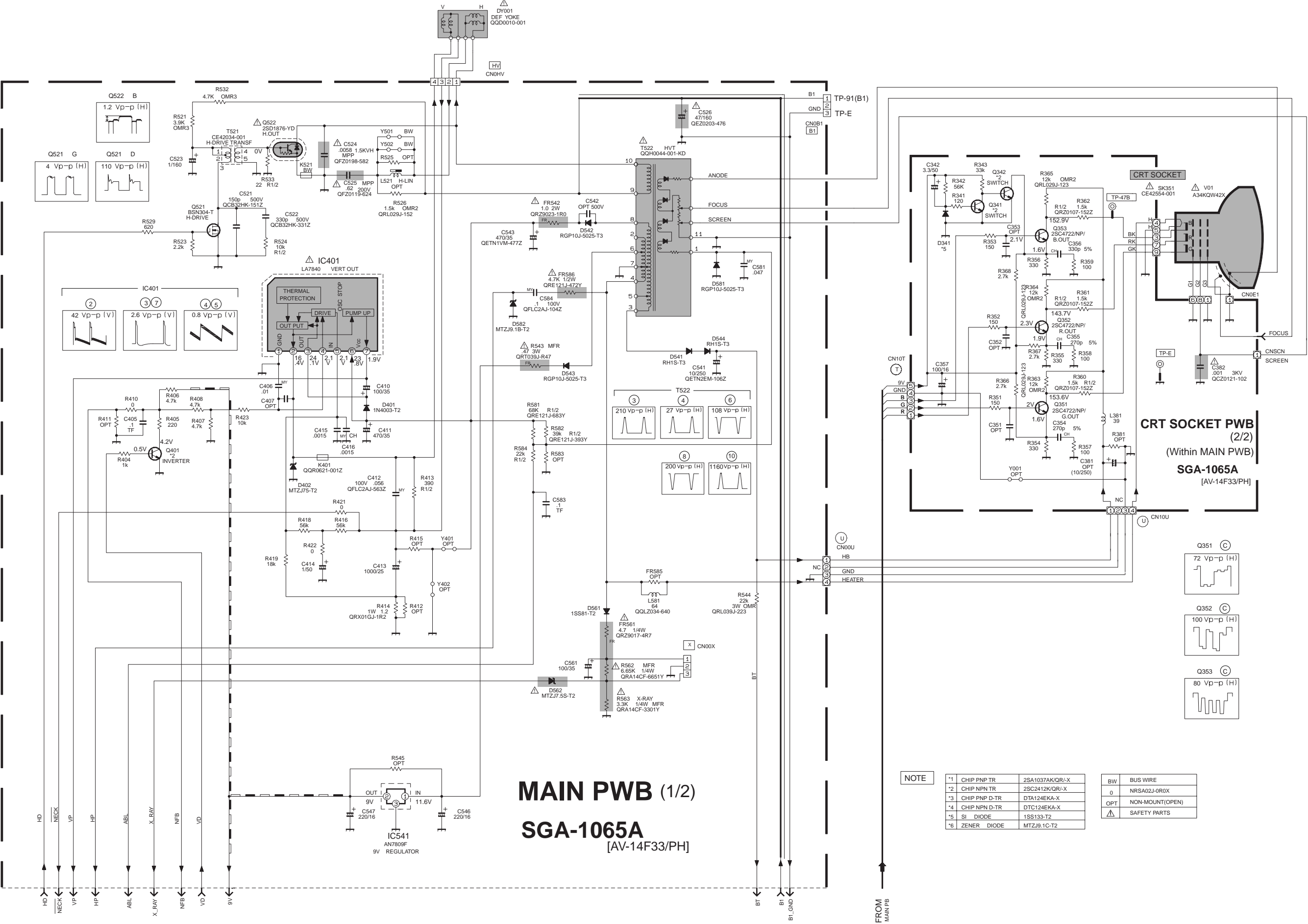


# MAIN PWB (1/2)

## SGA-1065A

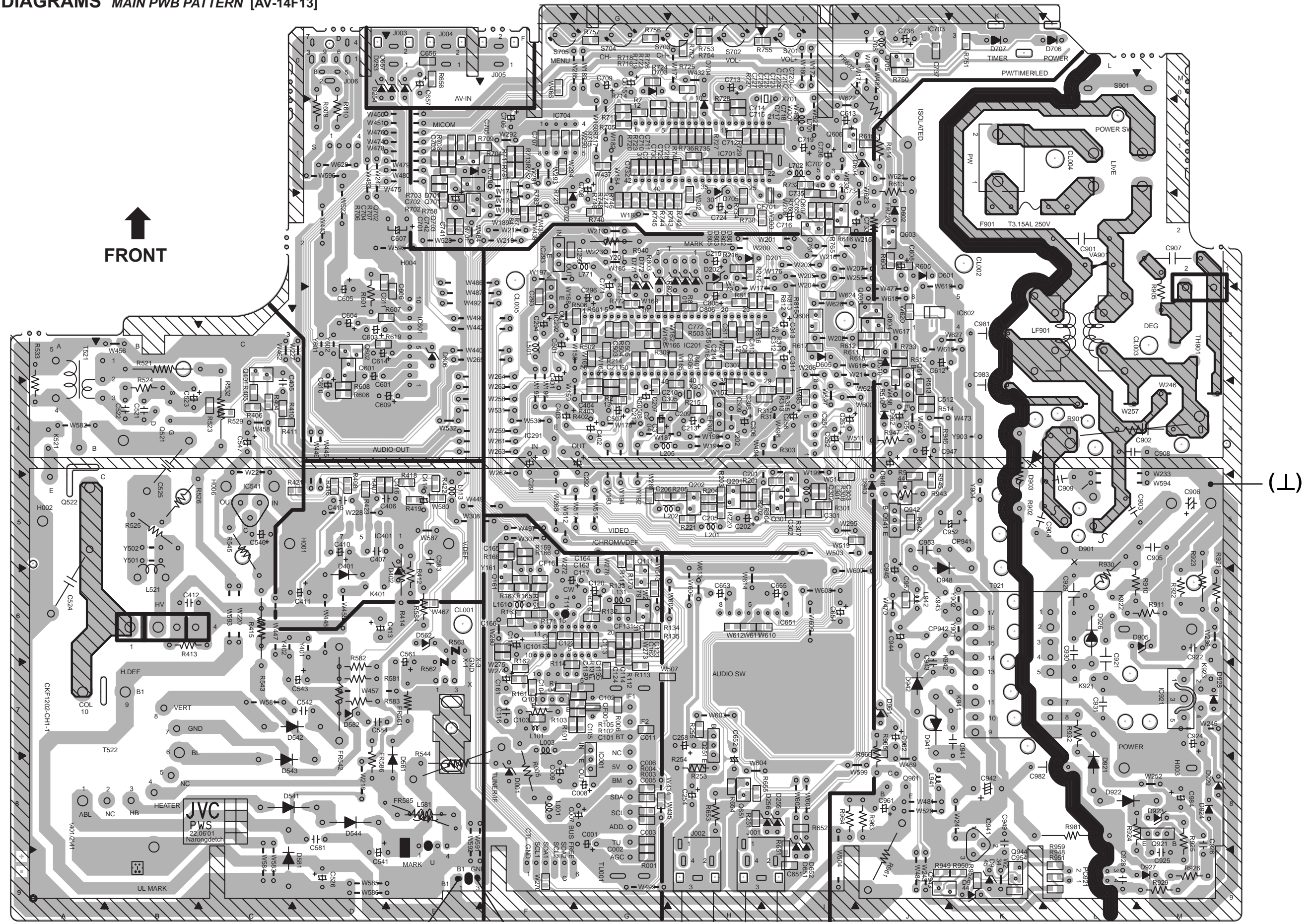
[AV-14F33/PH]



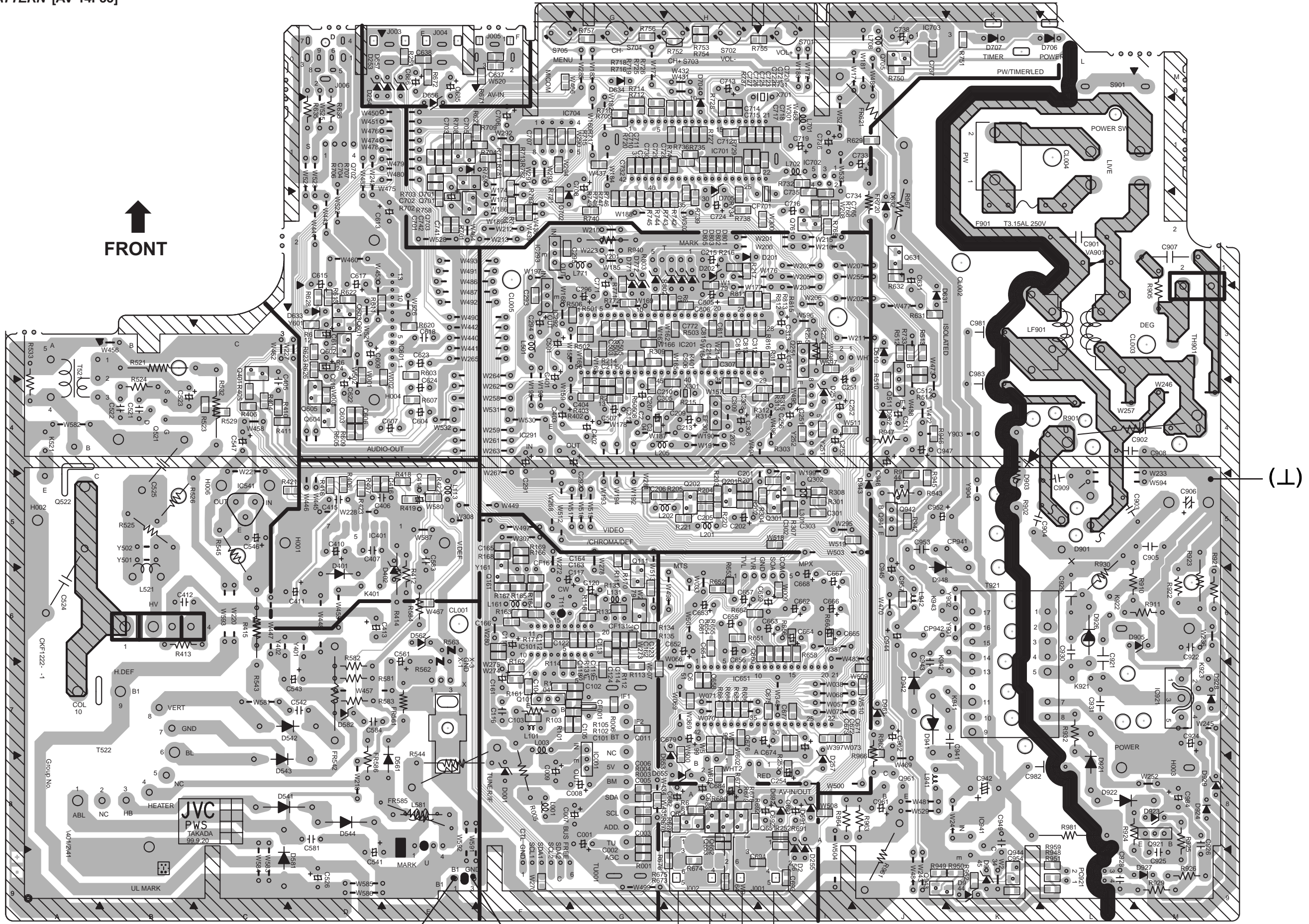


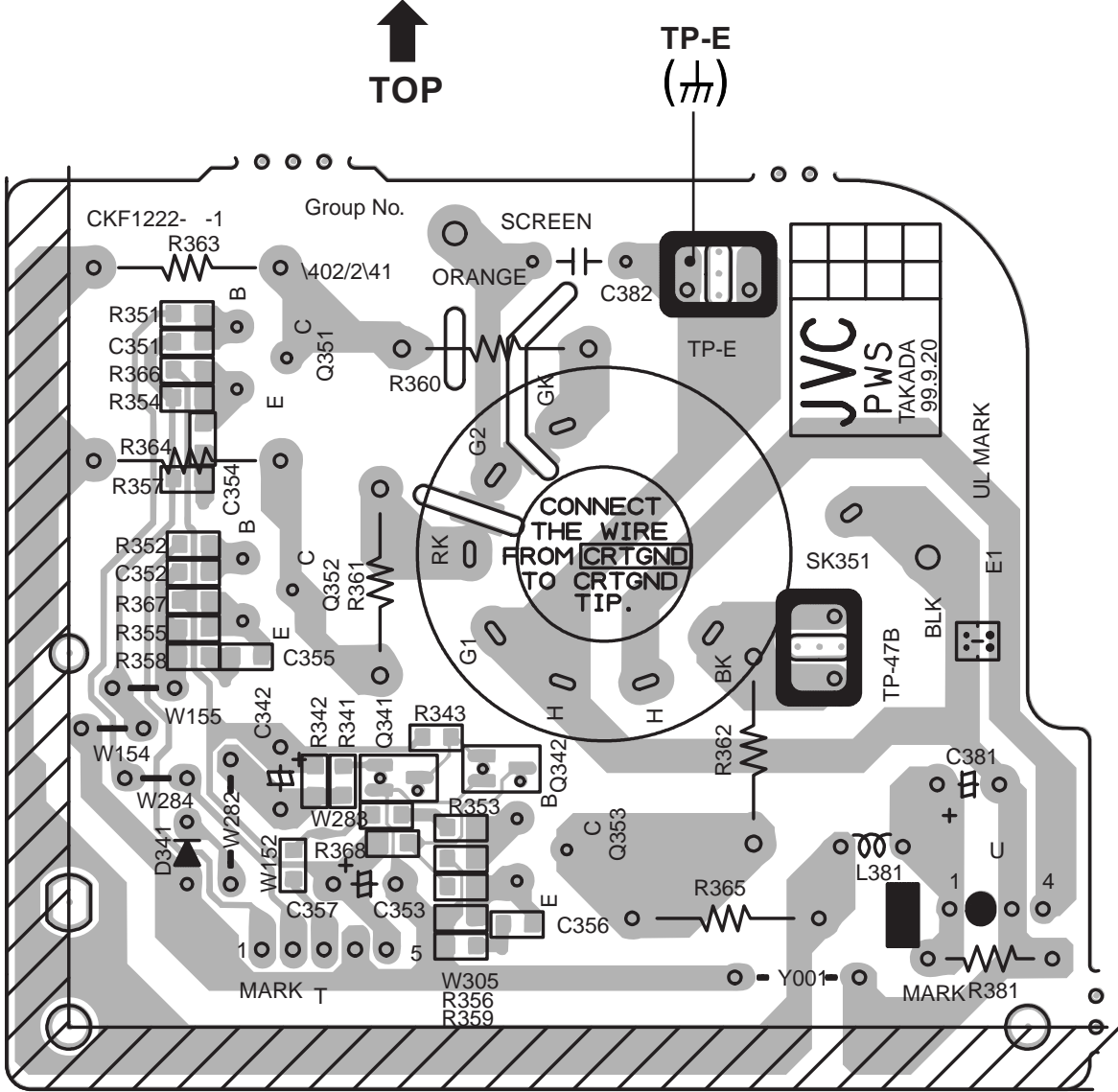
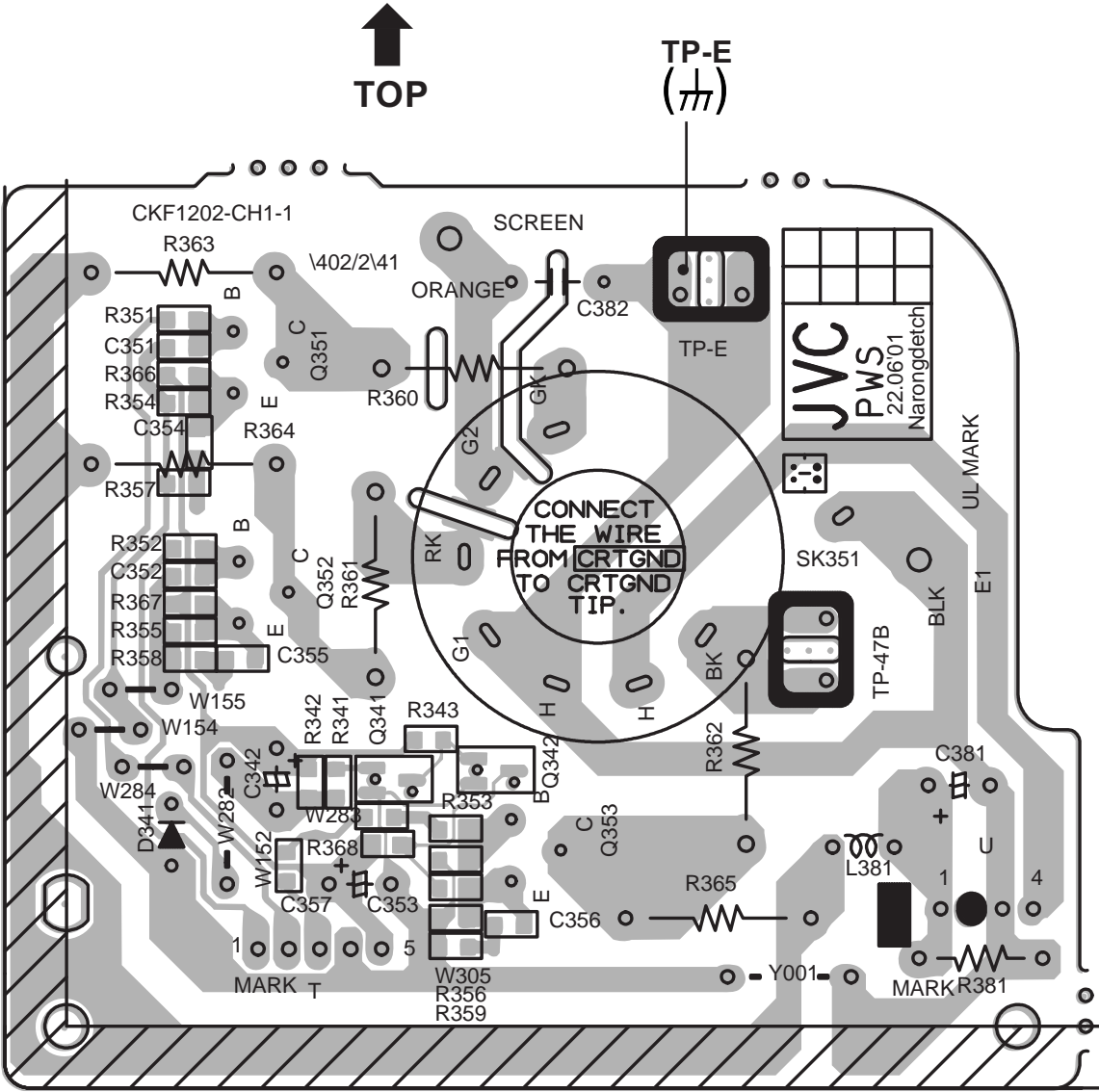


## PATTERN DIAGRAMS MAIN PWB PATTERN [AV-14F13]









CHANNEL CHART

MODE		BAND	CHANNEL	TUNER BAND
TV	CATV		DISP.	
○	○	VL	02	I
			03	
			04	
			05	
			06	
			07	
		VH	08	II
			09	
			10	
			11	
			12	
			13	
×	○	MID	14	I
			15	
			16	
			17	
			18	
			19	
		SUPER	20	II
			21	
			22	
			23	
			24	
			25	
			26	
			27	
			28	
			29	
			30	
			31	
			32	
			33	
			34	
			35	
			36	
		HYPER	37	IV
			38	
			39	
			40	
			41	
			42	
			43	
			44	
			45	
			46	
			47	
			48	
			49	
			50	
			51	
			52	
			53	
			54	
			55	
			56	
			57	
			58	
			59	
			60	
			61	
			62	
			63	
			64	
		ULTRA	65	
			66	
			67	
			68	
			69	
			70	

MODE		BAND	CHANNEL	TUNER BAND
TV	CATV		DISP.	
×	○	ULTRA	71	IV
			72	
			73	
			74	
			75	
			76	
			77	
			78	
			79	
			80	
			81	
			82	
			83	
			84	
			85	
			86	
			87	
			88	
			89	
			90	
			91	
			92	
			93	
			94	
			100	
			101	
			102	
			103	
			104	
			105	
			106	
			107	
			108	
			109	
			110	
			111	
			112	
			113	
			114	
			115	
			116	
			117	
			118	
			119	
			120	
			121	
			122	
			123	
			124	
			125	
		SUB MID	01	I
			96	
			97	
			98	
			99	
○	×	UHF	14 5 69	IV
TOTAL 180CH { VHF 124CH { UHF 56CH				
NOTE: TO RECEIVE THE SUBSCRIPTION OR PREMIUM PROGRAMMING FROM CERTAIN CABLE COMPANIES. SPECIAL ADAPTERS MAY BE REQUIRED.				



**VICTOR COMPANY OF JAPAN, LIMITED**

HOME AV NETWORK BUSINESS UNIT. 12, 3-chome, Moriya-cho, Kanagawa-ku, Yokohama, Kanagawa-prefecture, 221-8528, Japan



Printed in Japan  
VP 0207  
DP6060